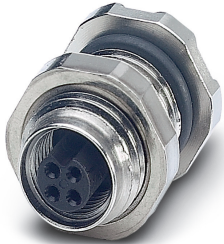


Device connector, rear mounting - SACC-DSI-M5FS-3CON-L180 - 1530647

Please be informed that the data shown in this PDF Document is generated from our Online Catalog. Please find the complete data in the user's documentation. Our General Terms of Use for Downloads are valid (<http://phoenixcontact.com/download>)




Sensor/actuator flush-type socket, 3-pos., M5, prewall/screw mounting, with straight solder connection

Your advantages

- ✓ Easy PCB assembly: one-piece connectors for wave soldering



Key Commercial Data

Packing unit	1 pc
Minimum order quantity	20 pc
GTIN	 4 046356 024440
GTIN	4046356024440
Weight per Piece (excluding packing)	4.230 g
Custom tariff number	85366990
Country of origin	Germany

Technical data

Ambient conditions

Ambient temperature (operation)	-25 °C ... 80 °C
	-25 °C ... 80 °C
Degree of protection	IP67

General

Rated current at 40°C	1 A
Rated voltage	60 V
Number of positions	3

Device connector, rear mounting - SACC-DSI-M5FS-3CON-L180 - 1530647

Technical data

General

Insulation resistance	≥ 100 MΩ
Coding	A - standard
Standards/regulations	M5 connector IEC 61076-2-105
Status display	No
Overvoltage category	II
Degree of pollution	3
Test voltage	800 V
Connection method	Solder pins
Mounting type	Rear mounting M5 x 0.5 With locking nut
Thread type	M5 x 0.5

Material

Flammability rating according to UL 94	HB
Contact material	CuSn
Contact surface material	Au
Contact carrier material	PA 6.6
Material, knurls	Nickel-plated brass
Sealing material	Viton

Cable

Standards/specifications	M5 connector IEC 61076-2-105
--------------------------	------------------------------

Standards and Regulations

Standards/specifications	M5 connector IEC 61076-2-105
Flammability rating according to UL 94	HB

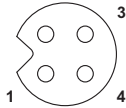
Environmental Product Compliance

REACH SVHC	Lead 7439-92-1
China RoHS	Environmentally Friendly Use Period = 25;
	For details about hazardous substances go to tab "Downloads", Category "Manufacturer's declaration"

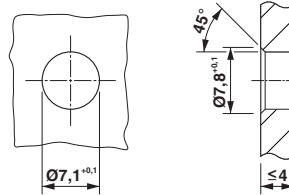
Drawings

Device connector, rear mounting - SACC-DSI-M5FS-3CON-L180 - 1530647

Schematic diagram

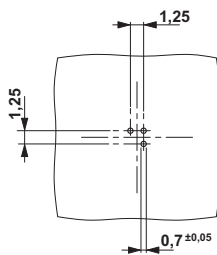


Dimensional drawing

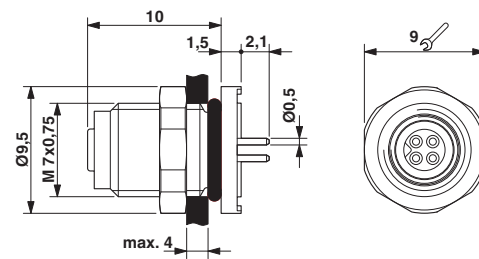


Pin assignment M5 socket, 3-pos., D-coded, view female side

Drilling diagram



Dimensional drawing



M5 flush-type socket

M5 flush-type socket

Classifications

eCl@ss

eCl@ss 10.0.1	27440102
eCl@ss 11.0	27440102
eCl@ss 4.0	27140800
eCl@ss 4.1	27140800
eCl@ss 5.0	27143400
eCl@ss 5.1	27143400
eCl@ss 6.0	27279200
eCl@ss 7.0	27440103
eCl@ss 9.0	27440102

ETIM

ETIM 2.0	EC001297
ETIM 3.0	EC002061
ETIM 4.0	EC002062
ETIM 6.0	EC002061

UNSPSC

UNSPSC 6.01	31251501
UNSPSC 7.0901	31251501

Device connector, rear mounting - SACC-DSI-M5FS-3CON-L180 - 1530647

Classifications

UNSPSC

UNSPSC 11	31251501
UNSPSC 12.01	31251501
UNSPSC 13.2	39121413
UNSPSC 18.0	39121413
UNSPSC 19.0	39121413
UNSPSC 20.0	39121413
UNSPSC 21.0	39121413

Approvals

Approvals

Approvals

EAC

Ex Approvals

Approval details

EAC		B.01687
-----	--	---------

Accessories

Accessories

Flat nut

Flat nut - SACC-E-MU-M 5 - 1535901



Flat nut with M5 thread